

Technical characteristics



Body type	DOUBLE FLANGE / Vulcanized seat
Characteristics	Concentric and bidirectional
Production range	DN 40-1200
Design standard	EN 593
Face to Face	EN 558-1 Series 13 ISO 5752 Series 13 BS 5155 series 2 Short type
Top flange	ISO 5211
Assembly flanges	PN 10/PN 16/ANSI class 150
Marking	EN 19
Maximum working pressure	16 bar DN 040-150 10 bar DN 200-1200 (16 bar optionally)
Temperature range	-40°C a 210°C depends of material
Hydraulic tests	EN 12266 / ISO 5208 Rate A
Remarks	Pressure equipment directive
Options	ATEX (II 2GD) 2014/34/EU

General description

The BBNV(w) butterfly valve with the vulcanized seat is used when a flanged valve is required for mounting with bolts on each side of the valve. It is very used for buried services, since it does not require almost maintenance by the type of vulcanized ring to the body. Its design allows to be mounted at the end of the line.

Applications

- Naval industry
- Water treatment plants
- Buried valves
- Pipelines water distribution
- Cooling systems



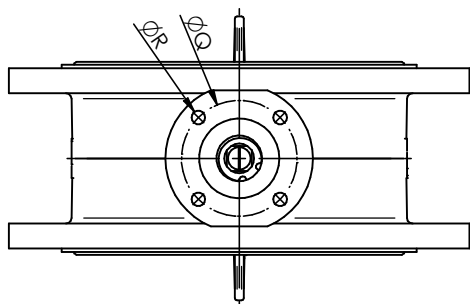
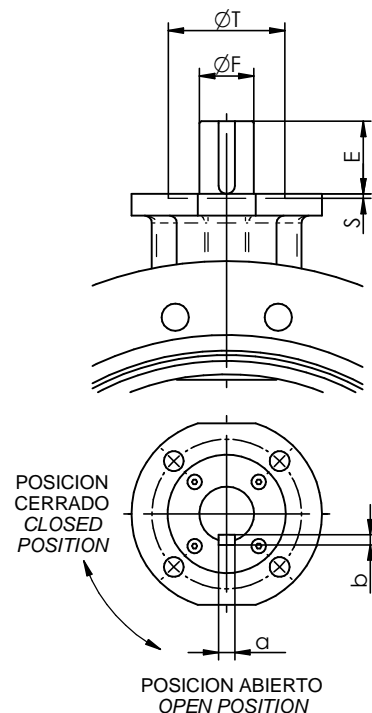
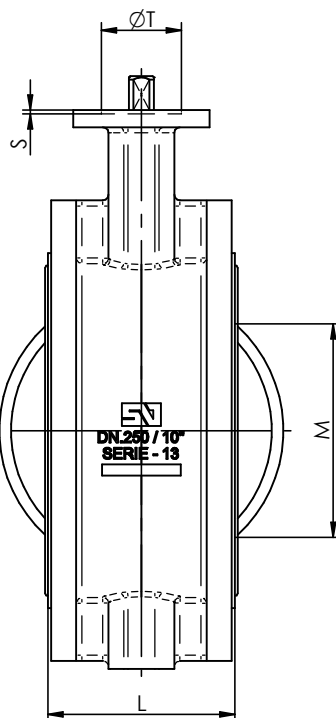
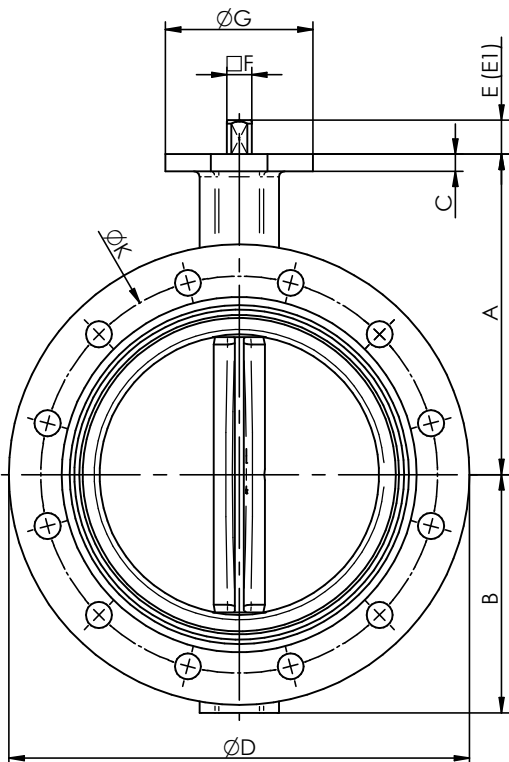
Technical sheets and dimensional drawings

BBNV(w)-001-DT	General dimensions
BBNV(w)-002-DT	Dimensions manual actuator
BBNV(w)-003-DT	Dimensions pneumatic actuator
BBNV(w)-004-DT	Dimensions electrical actuator Bernard
BBNV(w)-005-DT	Dimensions electrical actuator AUMA
BBNV(w)-006-DT	Assembling flanges
BBNV(w)-007-DT	Assembling screws
BBNV(w)-0010-DT	Materials detail DN 040-200
BBNV(w)-0011-DT	Materials detail DN 250-500
BBNV(w)-0012-DT	Materials detail DN 600-1100
BBNV(w)-0013-DT	Materials detail DN 1200



VALVULA DE MARIPOSA "BBNV(W)" / BUTTERFLY VALVE "BBNV(W)"

DIMENSIONES GENERALES / GENERAL DIMENSIONS



DN 40/500

DN 600/1400

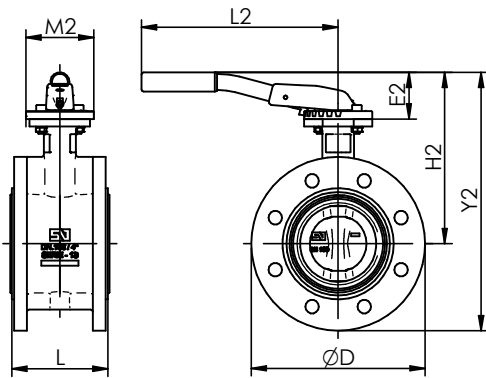
E1 - EJE CORTO OPCIONAL BAJO PEDIDO
E1 - SHORT SHAFT ON REQUEST

DIMENSIONES GENERALES / GENERAL DIMENSIONS

BRIDA / TOP FLANGE

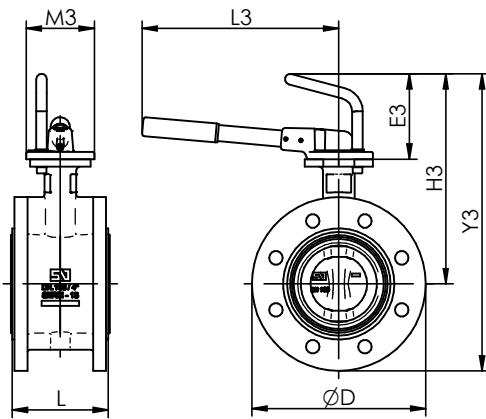
DN	A	B	C	D	E	E1	F	G	K			L	M	Kg	BRIDA / TOP FLANGE						
									PN10	PN16	Cl.150				ISO	Q	R	S	T	a x b	
40	1½"	110	75	10	150	30	16	11	90	110	110	98.5	106	-	5.5	F-07	70	4x9			
50	2"	120	82	10	165	30	16	11	90	125	125	120.6	108	-	6.5	F-07	70	4x9			
65	2½"	135	92	10	185	30	16	11	90	145	145	139.7	112	-	8.2	F-07	70	4x9			
80	3"	141	100	10	200	30	16	11	90	160	160	152.4	114	-	9.5	F-07	70	4x9			
100	4"	165	115	10	230	30	16	11	90	180	180	190.5	127	-	12.4	F-07	70	4x9			
125	5"	180	127	12	255	33	18	14	90	210	210	215.9	140	-	16.3	F-07	70	4x9			
150	6"	193	143	12	285	33	18	14	90	240	240	241.3	140	53	19.9	F-07	70	4x9			
200	8"	225	172	12	343	33	18	17	90	295	295	298.5	152	130	29.9	F-07	70	4x9			
250	10"	283	210	15	406	30	23	22	130	350	355	361.9	165	188	45.1	F-10	102	4x12	3	70	
300	12"	308	240	15	480	30	23	22	130	400	410	431.8	178	241	70.2	F-10	102	4x12	3	70	
350	14"	339	271	16	535	31		22	160	460	470	476.2	190	288	85.7	F-10	102	4x12	3	70	
400	16"	380	308	18	597	31		27	160	515	525	539.7	216	337	112	F-12	125	4x14	4	85	
450	18"	381	340	20	640	38		36	190	565	585	577.8	222	390	143	F-14	140	4x18	4	100	
500	20"	433	380	22	715	38		36	210	620	650	635.0	229	438	187	F-14	140	4x18	4	100	
600	24"	494	440	24	840	80		60	210	725	770	749.3	267	526	295	F-16	165	4x22	5	130	18x11
700	28"	560	485	25	927	106		65	300	840	840	863.5	292	614	384	F-25	254	8x18	5	200	18x11
750	30"	590	530	25	995	106		80	300	900	900	914.4	318	657	463	F-25	254	8x18	5	200	22x14
800	32"	630	565	29	1060	106		80	300	950	950	978	318	719	523	F-25	254	8x18	5	200	22x14
900	36"	695	610	32	1170	110		80	350	1050	1050	1086	330	827	679	F-25	254	8x18	5	200	22x14
1000	40"	770	675	32	1290	110		80	350	1160	1170	1200	410	901	905	F-25	254	8x18	5	200	22x14
1100	44"	815	733	32	1405	110		80	350	1270	1270	1314.5	410	995	1162	F-25	254	8x18	5	200	22x14
1200	48"	875	818	40	1510	110		100	350	1380	1390	1422	470	1083	1479	F-30	298	8x23	5	230	28x16

VALVULA DE MARIPOSA "BBNV(W)" / BUTTERFLY VALVE "BBNV(W)" ACTUADOR MANUAL / MANUAL ACTUATOR



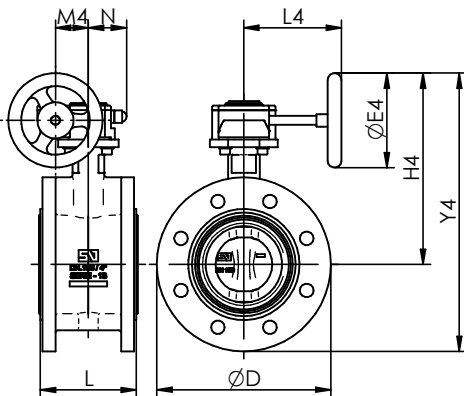
"MN"

DN	D	L	MN					Kg	
			E2	H2	Y2	L2	M2		
40	1½"	150	106	49	159	234	220	90	6.0
50	2"	165	108	49	171	254	220	90	6.9
65	2½"	185	112	49	186	279	220	90	8.6
80	3"	200	114	60	201	303	260	90	10.0
100	4"	230	127	60	225	340	260	90	13.1
125	5"	255	140	75	255	383	315	90	16.9
150	6"	285	140	75	268	411	315	90	20.5
200	8"	343	152	75	300	473	315	90	30.5



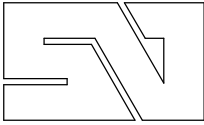
"MR"

DN	D	L	MR					Kg	
			E3	H3	Y3	L3	M3		
40	1½"	150	106	113	223	298	260	90	6.2
50	2"	165	108	113	233	315	260	90	7.1
65	2½"	185	112	113	248	340	260	90	8.6
80	3"	200	114	113	254	354	260	90	10.1
100	4"	230	127	113	278	393	260	90	13.0
125	5"	255	140	113	293	420	310	90	17.0
150	6"	285	140	113	306	448	310	90	20.6
200	8"	343	152	113	338	510	310	90	30.6
250	10"	406	165	121	403	613	500	130	46.8
300	12"	480	178	121	429	669	500	130	71.9



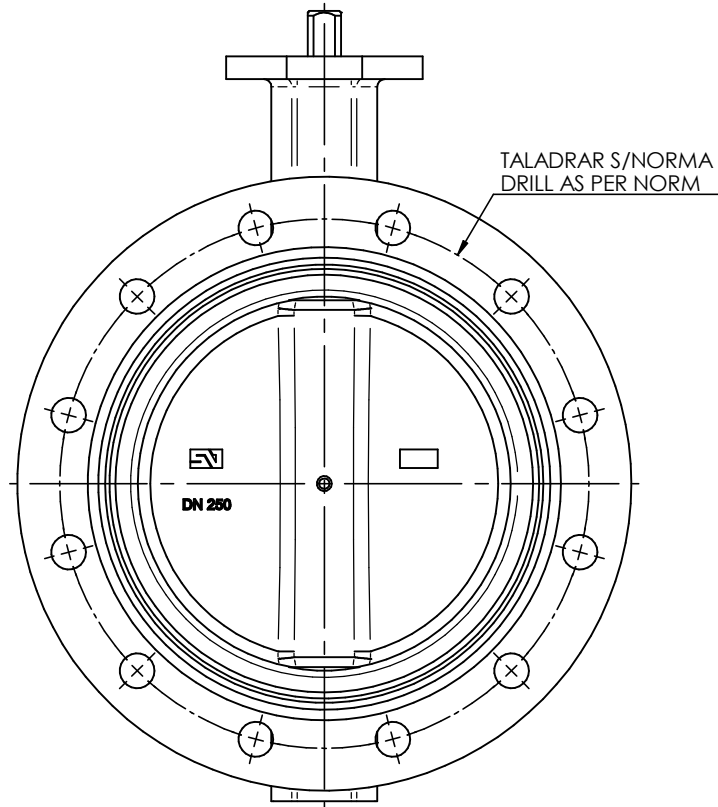
"MDV"

DN	D	L	P.N. Bar	MDV								
				REF	E4	H4	Y4	L4	M4	N	Kg	
40	1½"	150	10-16	0/X-21	125	198	273	129	43.5	50.5	6.8	
50	2"	165	10-16	0/X-21	125	208	290	129	43.5	50.5	7.8	
65	2½"	185	10-16	0/X-21	125	223	316	129	43.5	50.5	9.5	
80	3"	200	10-16	0/X-21	125	229	329	129	43.5	50.5	10.7	
100	4"	230	10-16	0/X-21	125	253	368	129	43.5	50.5	13.6	
125	5"	255	10-16	1/X-21	160	286	413	135	43.5	50.5	17.8	
150	6"	285	10-16	1/X-21	160	298	441	135	43.5	50.5	21.3	
200	8"	343	10-16	1A/X-41	200	355	526	152	52.5	59	32.4	
250	10"	406	10-16	2/X-61	250	442	652	222	61.2	70.5	48.5	
300	12"	480	10-16	2/X-61	250	468	708	222	61.2	70.5	73.6	
350	14"	535	10-16	2/X-61	250	498	770	222	61.2	70.5	90.2	
400	16"	597	10-16	2A/Q-800	300	572	880	277	68.8	72.5	122	
450	18"	640	10-16	3/Q-2000	400	630	970	321	96.5	91.5	162	
500	20"	715	10-16	3/Q-2000	400	682	1062	321	96.5	91.5	206	
600	24"	840	10-16	4/Q-4000	500	798	1239	408	138	140	330	
700	28"	292	10-16	10	4/Q-4000	500	864	1350	408	138	140	419
				16	5/Q-6500	600	914	1400	456	138	140	422
				16	5/Q-6500	600	984	1550	456	138	140	565
750	30"	318	10-16	5/Q-6500	600	944	1474	456	138	140	505	
				6/Q-12000	700	1044	1608	510	180	156	579	
800	32"	318	10-16	6/Q-12000	700	1108	1718	510	180	156	741	
				7/Q-16000	700	1184	1858	579	180	156	973	
900	36"	330	10-16	7/Q-16000	700	1228	1962	579	180	156	1229	
				8/Q-24000	700	1250	1983	593	252	228	1350	
1000	40"	410	10-16	8/Q-24000	700	1310	2128	593	252	228	1676	



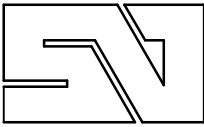
VALVULA DE MARIPOSA "BBNV(W)" / BUTTERFLY VALVE "BBNV(W)"

BRIDAS DE MONTAJE / ASSEMBLY FLANGES



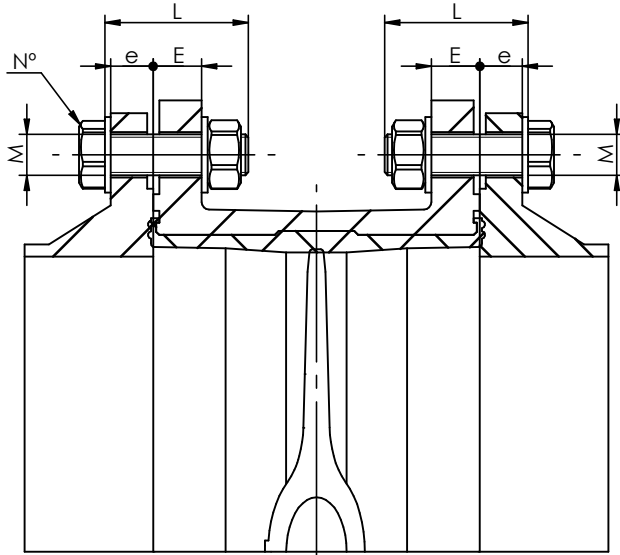
X ESTANDAR / STANDARD
 O BAJO DEMANDA / ON REQUEST
 -- NO POSIBLE / NOT POSSIBLE

DN		PN.6	PN.10	PN.16	PN.20	ANSI 150 Lbs	AWWA C207	ASME B16.47a-150	ASME B16.47a-300	ASME B16.47b-150	ASME B16.47b-300	BS, D	BS, E	JIS 5k	JIS 10k	JIS 16k	AS 2129 E
40	1½"	X	X	X	X	X						X	X	X	X	X	X
50	2"	X	X	X	X	X						X	X	X	X	X	X
65	2½"	X	X	X	X	X						X	X	X	X	X	X
80	3"	X	X	X	X	X						X	X	X	X	X	X
100	4"	X	X	X	X	X	X					X	X	X	X	X	X
125	5"	X	X	X	X	X	X					X	X	X	X	X	X
150	6"	X	X	X	X	X	X					X	X	X	X	--	X
200	8"	X	X	X	X	X	X					X	X	X	X	X	X
250	10"	X	X	X	X	X	X					X	X	X	X	--	X
300	12"	X	X	X	X	X	X					X	X	X	X	X	X
350	14"	X	X	X	X	X	X					X	X	--	X	X	X
400	16"	X	X	X	X	X	X					X	X	--	X	X	X
450	18"	X	X	X	X	X	X					X	X	X	X	X	X
500	20"	X	X	X	X	X	X					X	X	X	X	X	X
600	24"	X	X	X	X	X	X					X	X	X	X	X	X
700	28"	X	X	X		X	X	X	--	X	X	X	X	X	X	X	X
750	30"	X	X	X		X	X	X	--	X	X	X	X	X	X	X	X
800	32"	X	X	X		X	X	X	--	X				X	X	X	X
900	36"	X	X	X		X	X	X	--	X	X	X	X	X	X	X	X
1000	40"	X	X	X		X	X	X	X	X				X	X	X	X
1100	44"	X	X	X		X	X	X	X	X				X	X	X	X
1200	48"	X	X	X		X	X	X	--	X	X	X	X	X	X	X	X

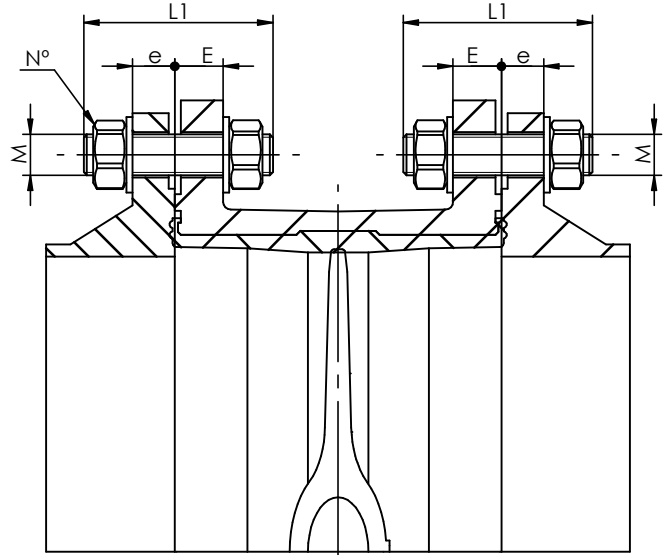


VALVULA DE MARIPOSA "BBNV(W)" / BUTTERFLY VALVE "BBNV(W)"

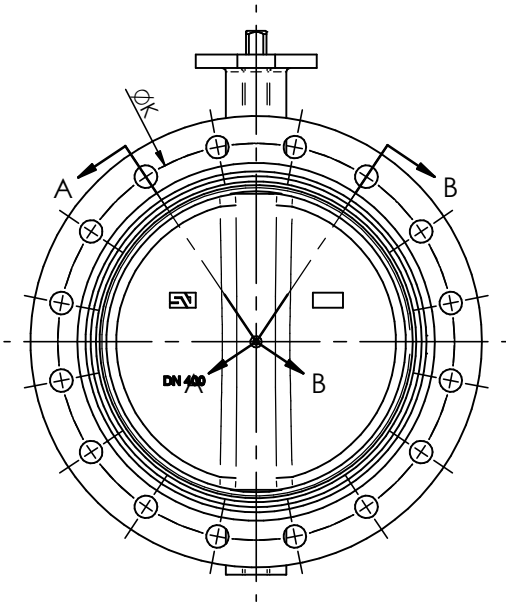
TORNILLERIA DE MONTAJE / ASSEMBLY SCREWING



CORTE A-A
TORNILLO / SCREW

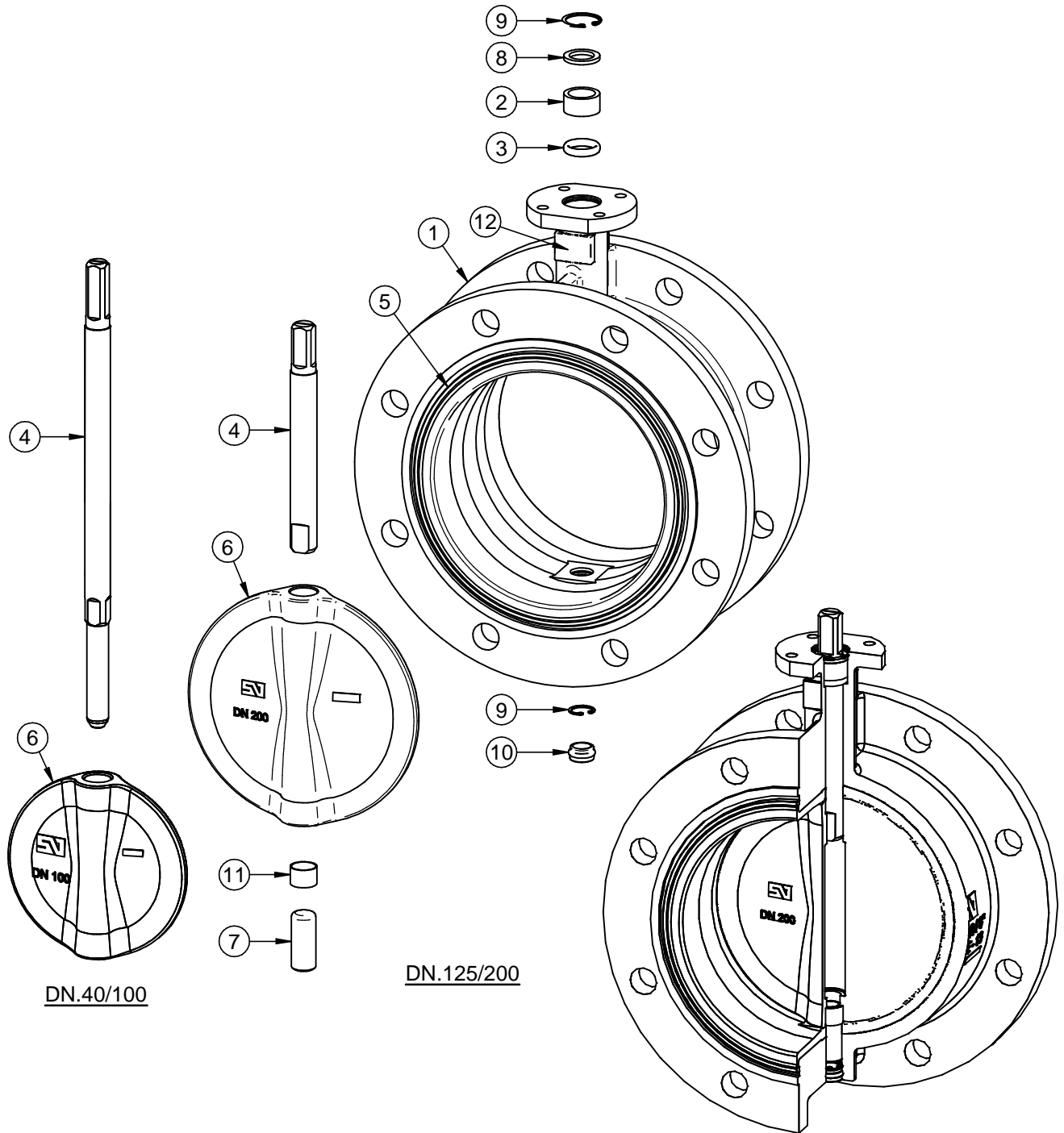


CORTE B-B
VARILLA / ROD



DN	E	PN.10							PN.16							ANSI 150 Lbs / PN.20					
		K	e	M	L	L1	N°	K	e	M	L	L1	N°	K	e	M	L	L1	N°		
40	1½"	18	110	16	M16	60	75	8	110	16	M16	60	75	8	98.4	17.5	1/2"	M14	55	70	8
50	2"	18	125	18	M16	60	75	8	125	18	M16	60	75	8	120.6	19.0	5/8"	M16	60	80	8
65	2½"	18	145	18	M16	60	75	8	145	18	M16	60	75	8	139.7	22.2	5/8"	M16	65	80	8
80	3"	20	160	20	M16	65	80	16	160	20	M16	65	80	16	152.4	23.8	5/8"	M16	70	85	8
100	4"	20	180	20	M16	65	80	16	180	20	M16	65	80	16	190.5	23.8	5/8"	M16	70	85	16
125	5"	22	210	22	M16	70	85	16	210	22	M16	70	85	16	215.9	23.8	3/4"	M20	75	95	16
150	6"	22	240	22	M20	70	95	16	240	22	M20	70	95	16	241.3	25.4	3/4"	M20	75	100	16
200	8"	23	295	24	M20	75	95	16	295	24	M20	75	95	24	298.5	28.6	3/4"	M20	80	105	16
250	10"	25	350	26	M20	80	100	24	355	26	M24	85	110	24	361.9	30.2	7/8"	M24	90	110	24
300	12"	28	400	26	M20	80	105	24	410	28	M24	90	115	24	431.8	31.7	7/8"	M24	90	115	24
350	14"	30	460	26	M20	85	105	32	470	30	M24	95	120	32	476.2	34.9	1"	M27	100	130	24
400	16"	32	515	26	M24	90	115	32	525	32	M27	100	130	32	539.7	36.5	1"	M27	105	135	32
450	18"	34	565	26	M24	95	120	40	585	32	M27	105	130	40	577.8	39.7	1.1/8"	M30	115	145	32
500	20"	36	620	28	M24	100	125	40	650	34	M30	110	140	40	635.0	46.0	1.1/8"	M30	125	150	40
600	24"	41	725	28	M27	105	135	40	770	36	M33	120	155	40	749.3	47.6	1.1/4"	M33	130	165	40
700	28"	44	840	30	M27	110	140	48	840	36	M33	125	155	48	863.5	52.5	1.1/4"	M33	140	175	56
750	30"	48	900	32	M30	120	150	48	900	38	M33	130	165	48	914.4	54.0	1.1/4"	M33	145	180	56
800	32"	48	950	32	M30	120	150	48	950	38	M36	135	170	48	978	57.0	1.1/2"	M39	155	195	56
900	36"	51	1050	34	M30	125	160	56	1050	40	M36	140	175	56	1086	60.0	1.1/2"	M39	165	200	64
1000	40"	55	1160	34	M33	135	165	56	1170	42	M39	150	190	56	1200	63.5	1.1/2"	M39	170	210	72
1100	44"	58	1270	38	M33	145	180	64	1270	48	M39	160	195	64	1314.5	101	1.1/2"	M39	210	250	80
1200	48"	62	1380	38	M36	150	185	64	1390	48	M45	170	215	64	1422	108	1.1/2"	M39	220	260	88

VALVULA DE MARIPOSA "BBNV(W)" / BUTTERFLY VALVE "BBNV(W)" DESPIECE DE MATERIALES "DN.40/200" / MATERIALS DETAIL



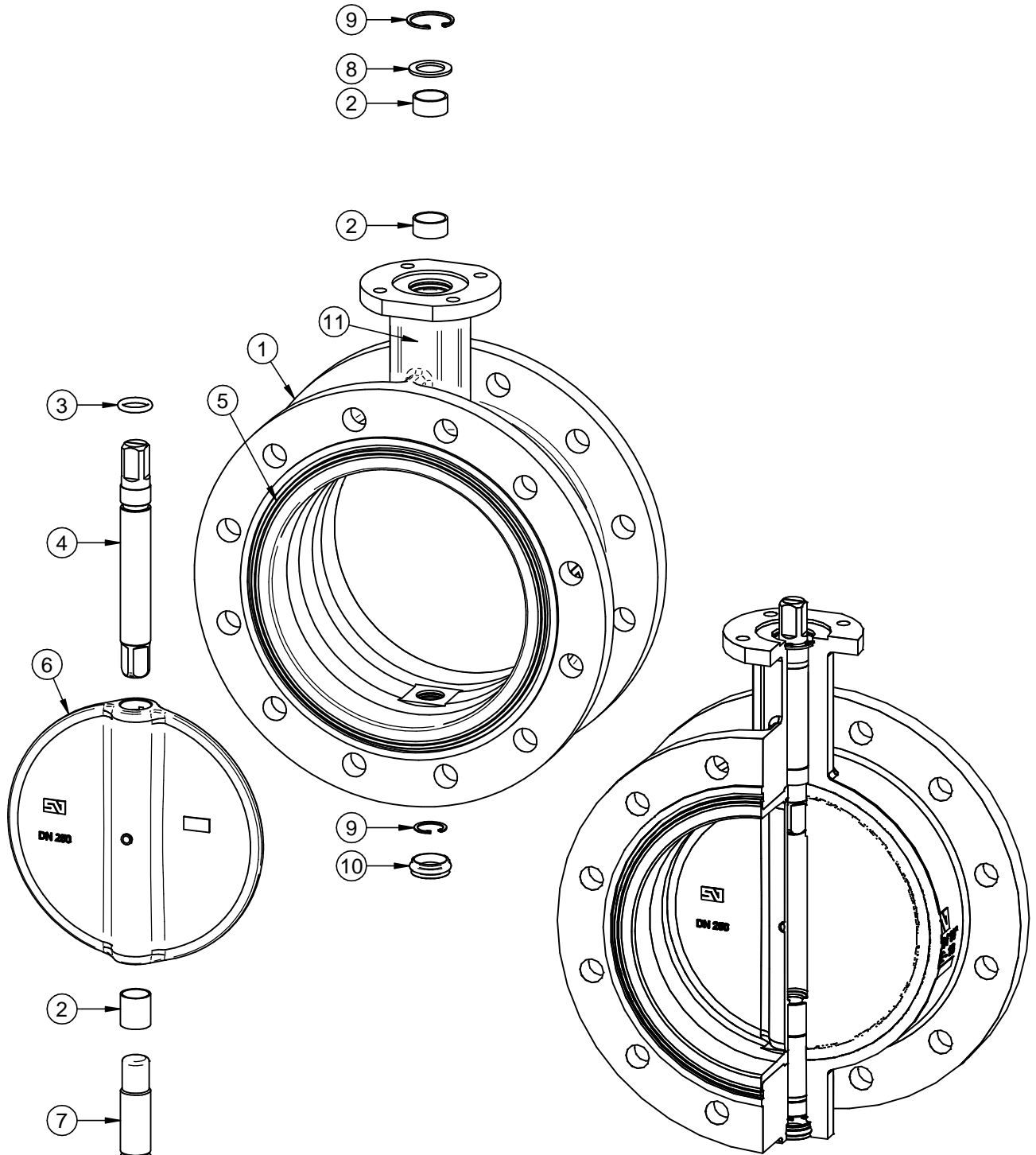
DN.40/100

DN.125/200

DATOS TECNICOS / TECHNICAL DATA
FABRICACION ESTANDAR / STANDARD PRODUCTION
 - DN.40/150 - 16 Bar
 - DN.200 - 10 Bar
PRUEBA HIDROSTATICA Y DE RESISTENCIA
HYDROSTATIC AND RESISTANCE TEST:
 CON VALVULA ABIERTA / OPEN VALVE:
 - 10 Bar - 15 Kg/cm²
 - 16 Bar - 24 Kg/cm²
 CON VALVULA CERRADA / CLOSED VALVE:
 - 10 Bar - 11 Kg/cm²
 - 16 Bar - 17.6 Kg/cm²

12	PLACA CARACTERISTICAS FEATURES TAG	POLIESTER POLYESTER		1
11	CASQUILLO ROZAMIENTO BUSHING	ACERO-BZ-PTFE STEEL-BZ-PTFE	DN.200	1
10	TAPON INFERIOR LOWER PLUG	E.P.D.M.	DN.125/200	1
9	ANILLO ELASTICO DIN 472 ZEGI RING BODY DIN 472	ACERO CINCADO ZINC PLATED STEEL	DN.80/100	1
			DN.125/200	2
8	ARANDELA RETENCION RETAINING RING	ACERO CINCADO ZINC PLATED STEEL		1
7	EJE INFERIOR LOWER SHAFT	S/HOJA E-0001 ACC. TO SHEET E-0001	DN.125/200	1
6	MARIPOSA DISC	S/ HOJA M-0001 ACC. TO SHEET M-0001		1
5	ANILLO SEAT	S/ HOJA A-0001 ACC. TO SHEET A-0001	VULCANIZADO AL CUERPO VULCANIZED ON BODY	1
4	EJE SUPERIOR UPPER SHAFT	S/ HOJA E-0001 ACC. TO SHEET E-0001		1
3	JUNTA TORICA "O" RING	NITRILO NITRILE		1
2	CASQUILLO ROZAMIENTO BUSHING	ACETAL DELRIN	DN.80/200	1
1	CUERPO DE VALVULA VALVE BODY	S/ HOJA C-0001 ACC. TO SHEET C-0001	RECUB. EPOXY COATING EPOXY	1
POS ITEM	DESIGNACION DESIGNATION	MATERIAL MATERIAL	OBSERVACIONES REMARKS	CANT QUAN

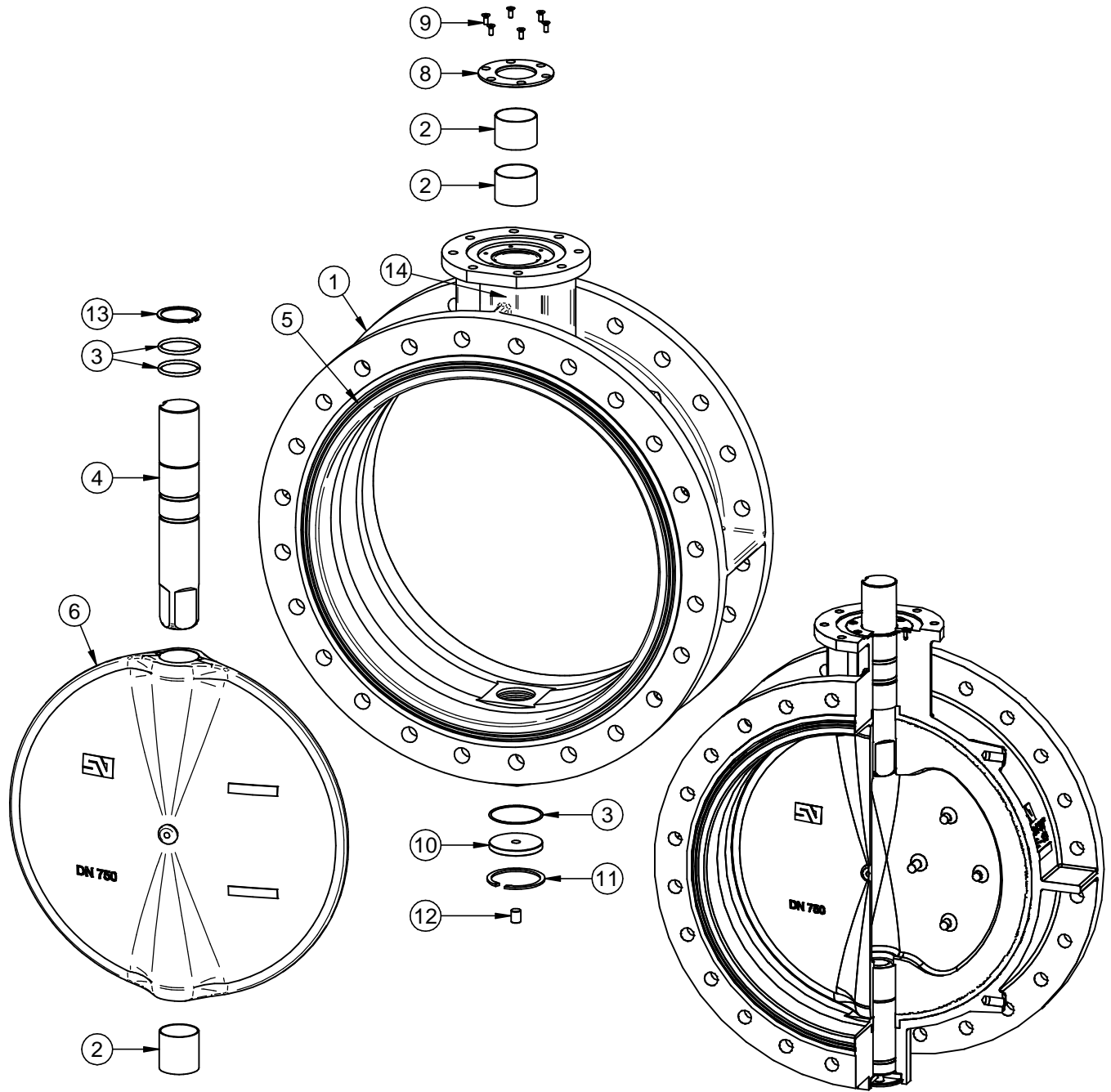
VALVULA DE MARIPOSA "BBNV(W)" / BUTTERFLY VALVE "BBNV(W)" DESPIECE DE MATERIALES "DN.250/500" / MATERIALS DETAIL



DATOS TECNICOS / TECHNICAL DATA
FABRICACION ESTANDAR / STANDARD PRODUCTION
 - DN.250/500 - 10 Bar
PRUEBA HIDROSTATICA Y DE RESISTENCIA
HYDROSTATIC AND RESISTANCE TEST:
 CON VALVULA ABIERTA / OPEN VALVE:
 - 10 Bar - 15 Kg/cm²
 CON VALVULA CERRADA / CLOSED VALVE:
 - 10 Bar - 11 Kg/cm²

11	PLACA CARACTERISTICAS FEATURES TAG	POLIESTER POLYESTER		1
10	TAPON INFERIOR LOWER PLUG	E.P.D.M.		1
9	ANILLO ELASTICO ZEGI RING BODY	ACERO CINCADO ZINC PLATED STEEL	DIN 472	2
8	ARANDELA RETENCION RETAINING RING	ACERO CINCADO ZINC PLATED STEEL		1
7	EJE INFERIOR LOWER SHAFT	S/ HOJA E-0001 ACC. TO SHEET E-0001		1
6	MARIPOSA DISC	S/ HOJA M-0001 ACC. TO SHEET M-0001		1
5	ANILLO SEAT	S/ HOJA A-0001 ACC. TO SHEET A-0001	VULCANIZADO AL CUERPO VULCANIZED ON BODY	1
4	EJE SUPERIOR UPPER SHAFT	S/ HOJA E-0001 ACC. TO SHEET E-0001		1
3	JUNTA TORICA "O" RING	NITRILO NITRILE		2
2	CASQUILLO ROZAMIENTO BUSHING	ACERO-BZ-PTFE STEEL-BZ-PTFE		3
1	CUERPO DE VALVULA VALVE BODY	S/ HOJA C-0001 ACC. TO SHEET C-0001	RECUB. EPOXY COATING EPOXY	1
POS ITEM	DESIGNACION DESIGNATION	MATERIAL MATERIAL	OBSERVACIONES REMARKS	CANT QUAN

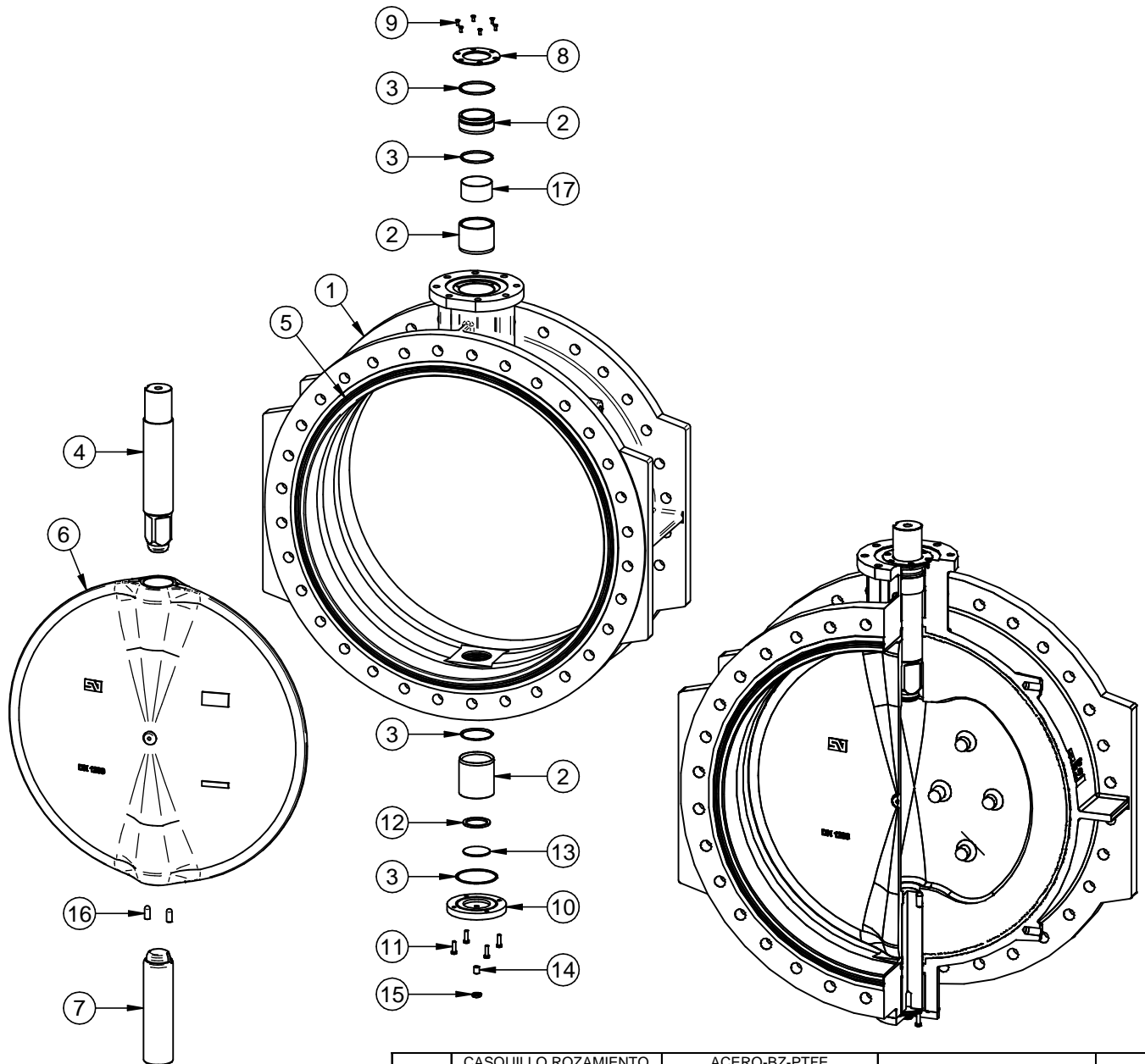
VALVULA DE MARIPOSA "BBNV(W)" / BUTTERFLY VALVE "BBNV(W)" DESPIECE DE MATERIALES "DN.600/1100" / MATERIALS DETAIL



DATOS TECNICOS / TECHNICAL DATA
FABRICACION ESTANDAR / STANDARD PRODUCTION
 - DN.600/1100 - 10 Bar
PRUEBA HIDROSTATICA Y DE RESISTENCIA
HYDROSTATIC AND RESISTANCE TEST:
 CON VALVULA ABIERTA / OPEN VALVE:
 - 10 Bar - 15 Kg/cm²
 CON VALVULA CERRADA / CLOSED VALVE:
 - 10 Bar - 11 Kg/cm²

14	PLACA CARACTERISTICAS FEATURES TAG	POLIESTER POLYESTER		1
13	ANILLO ELASTICO EJE RETAINING RING SHAFT	ACERO CINCO ZINC PLATED STEEL	DIN 471 DN600/800	1
12	ESPARRAGO SCREW	ACERO CINCO ZINC PLATED STEEL	DIN 913 DN.750/1100	1
11	ANILLO ELASTICO ZEGI RING BODY	ACERO CINCO ZINC PLATED STEEL	DIN 472	1
10	TAPA INFERIOR LOWER COVER	ACERO CARBONO CARBON STEEL	RECUB. EPOXY COATING EPOXY	1
9	TORNILLO TAPA SUP BOLT UPPER COVER	ACERO CINCO ZINC PLATED STEEL	DIN 7991 DN.600 DN.700/1100	4 6
8	TAPA SUPERIOR UPPER COVER	ACERO CARBONO CARBON STEEL	RECUB. EPOXY COATING EPOXY	1
7	EJE INFERIOR LOWER SHAFT	S/HOJA E-0001 ACC. TO SHEET E-0001		1
6	MARIPOSA DISC	S/ HOJA M-0001 ACC. TO SHEET M-0001		1
5	ANILLO SEAT	S/ HOJA A-0001 ACC. TO SHEET A-0001	VULCANIZADO AL CUERPO VULCANIZED ON BODY	1
4	EJE SUPERIOR UPPER SHAFT	S/ HOJA E-0001 ACC. TO SHEET E-0001		1
3	JUNTA TORICA "O" RING	NITRIL NITRILE		4
2	CASQUILLO ROZAMIENTO BUSHING	ACERO-BZ-PTFE STEEL-BZ-PTFE		3
1	CUERPO DE VALVULA VALVE BODY	S/ HOJA C-0001 ACC. TO SHEET C-0001	RECUB. EPOXY COATING EPOXY	1
POS ITEM	DESIGNACION DESIGNATION	MATERIAL MATERIAL	OBSERVACIONES REMARKS	CANT QUAN

VALVULA DE MARIPOSA "BBNV(W)" / BUTTERFLY VALVE "BBNV(W)" DESPIECE DE MATERIALES "DN.1200" / MATERIALS DETAIL



17	CASQUILLO ROZAMIENTO BUSHING	ACERO-BZ-PTFE STEEL-BZ-PTFE		1
16	CHAVETA CILINDRICA KEYWAY	ACERO INOX. AISI 420 STAINLESS STEEL AISI 420		2
15	TUERCA NUT	ACERO CINCADO ZINC PLATED STEEL	DIN 934	1
14	ESPARRAGO SCREW	ACERO CINCADO ZINC PLATED STEEL	DIN 913	1
13	DISCO ROZAMIENTO FRICTION DISC	ACERO CINCADO ZINC PLATED STEEL		1
12	ARANDELA INFERIOR LOWER RING	BRONCE / LATON BRONZE / BRASS		1
11	TORNILLO TAPA INF BOLT LOWER COVER	ACERO CINCADO ZINC PLATED STEEL	DIN 931	4
10	TAPA INFERIOR LOWER COVER	ACERO CARBONO CARBON STEEL	RECUB. EPOXY COATING EPOXY	1
9	TORNILLO TAPA SUP BOLT UPPER COVER	ACERO CINCADO ZINC PLATED STEEL	DIN 7991	6
8	TAPA SUPERIOR UPPER COVER	ACERO CARBONO CARBON STEEL	RECUB. EPOXY COATING EPOXY	1
7	EJE INFERIOR LOWER SHAFT	S/HOJA E-0001 ACC. TO SHEET E-0001		1
6	MARIPOSA DISC	S/ HOJA M-0001 ACC. TO SHEET M-0001		1
5	ANILLO SEAT	S/ HOJA A-0001 ACC. TO SHEET A-0001	VULCANIZADO AL CUERPO VULCANIZED ON BODY	1
4	EJE SUPERIOR UPPER SHAFT	S/ HOJA E-0001 ACC. TO SHEET E-0001		1
3	JUNTA TORICA "O" RING	NITRIL NITRILE		4
2	CASQUILLO ROZAMIENTO BUSHING	BRONCE / LATON BRONZE / BRASS		3
1	CUERPO DE VALVULA VALVE BODY	S/ HOJA C-0001 ACC. TO SHEET C-0001	RECUB. EPOXY COATING EPOXY	1
POS ITEM	DESIGNACION DESIGNATION	MATERIAL MATERIAL	OBSERVACIONES REMARKS	CANT QUAN

DATOS TECNICOS / TECHNICAL DATA
FABRICACION ESTANDAR / STANDARD PRODUCTION
- DN.1200 - 10 Bar
PRUEBA HIDROSTATICA Y DE RESISTENCIA
HYDROSTATIC AND RESISTANCE TEST:
CON VALVULA ABIERTA / OPEN VALVE:
- 10 Bar - 15 Kg/cm²
CON VALVULA CERRADA / CLOSED VALVE:
- 10 Bar - 11 Kg/cm²