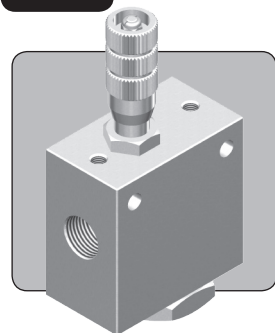


# CMF50 METERING VALVE

1/2" UP TO 414 BAR 6,000 PSI



The CMF50 is a 1/2" nominal bore metering valve with a reverse free-flow check function. It provides metered flow in one direction, and free flow in the opposite direction, ideal for uni-directional speed control of a cylinder or actuator.

The valve can be adjusted manually after installation, and the setting can be locked.

Note that this is a flow control valve and is not intended to provide tight shut-off when closed.

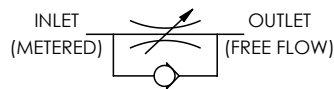
- Metering valve with reverse free-flow check feature
- Micrometer style adjustment with engraved graduations
- Non-rotating valve stem with lockable adjustment
- Ideal for uni-directional speed control
- Stainless steel construction suitable for liquid or gas
- Can be panel mounted
- Suitable for use with air, nitrogen, sweet natural gas, mineral oils, water glycols and plain water
- Suitable for many other media. Contact us for advice
- Various porting options available
- Various seal options available on request

## Specifications

**BASIC MODEL NUMBER**

**CMF50**

**SYMBOL**



**MAX WORKING PRESSURE (LIQUID)** 414 bar (6,000 psi)

**MAX WORKING PRESSURE (GAS)** 207 bar (3,000 psi)

**CV (FLOW CAPACITY)** Up to 1.4  
See Typical Performance Graph

**FLUID** Liquids and Gases  
See materials section

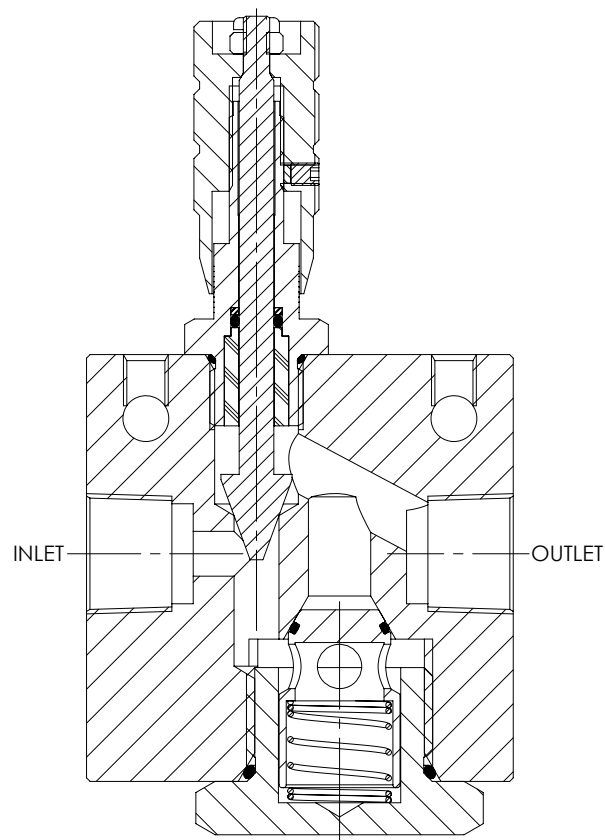
**TEMPERATURE RANGE** See Product Selector opposite and Technical Data section

**PORT SIZE** 1/2"

**CHECK ELEMENT CRACKING PRESSURE** 0.1 - 0.3 bar (2 - 5 psi)

**WEIGHT** 2.0 kg (4.4 lb)

Specifications may change without notice



## Materials

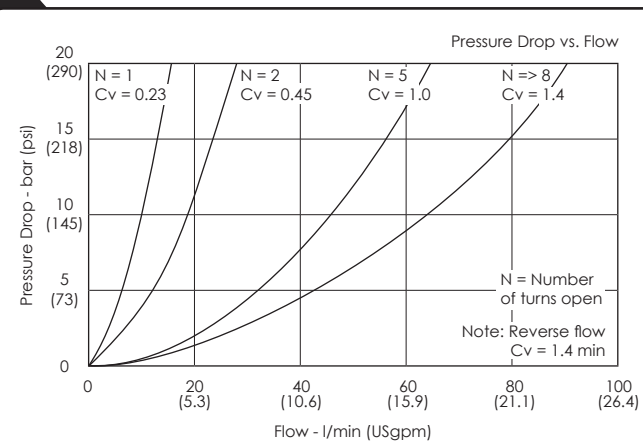
Externally Exposed Parts: 316, 302 and 17-4 PH stainless steel.

Internally Wetted Parts: 316, 302 and 17-4 PH stainless steel, and acetal.

The standard valve is designed for use with air, nitrogen, sweet natural gas, mineral oil, water glycols and plain water, but may be used with a wide variety of media compatible with the materials of construction. Other material options are available and for further advice, please contact us.

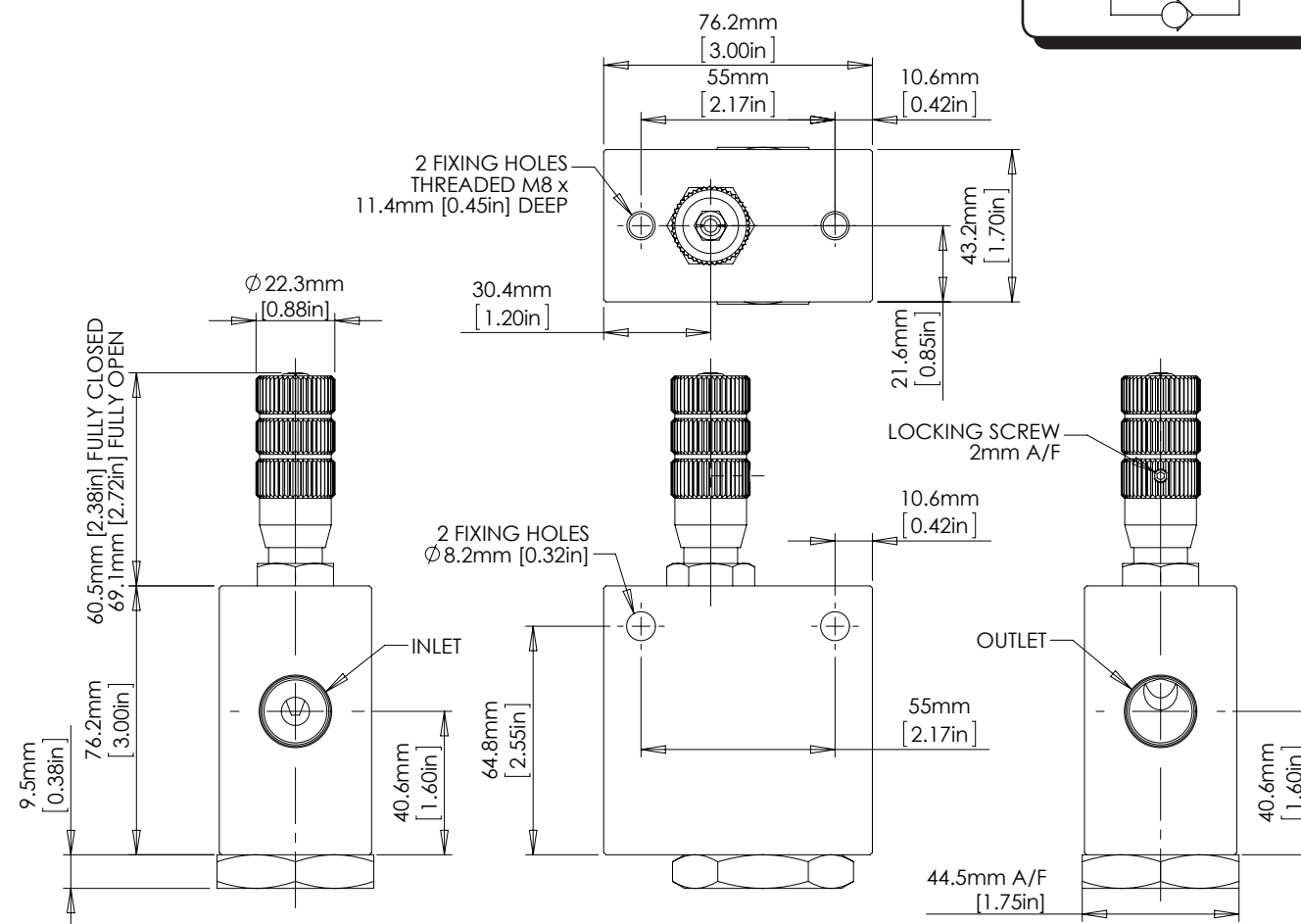
⚠ The standard valve has Viton® seals. Further seal options are available via the Product Selector. Compatibility with the working fluid at the operating temperature must be considered.

## Typical Performance



Typical performance based on water

## Installation Diagram



## Product Selector

### CMF50 P - NBR - 6K

VALVE TYPE	PORTING OPTIONS	SEAL OPTIONS	MAX WORKING PRESSURE
<b>CMF50</b>	<b>P</b> 1/2" BSPP female	Leave blank for Viton® seals -10°C to +120°C	<b>6K</b> 414 bar (6,000 psi) Liquid
	<b>N</b> 1/2" NPT female	<b>NBR</b> Nitrile seals -30°C to +105°C	207 bar (3,000 psi) Gas
		<b>EP</b> EPDM seals -45°C to +120°C	
		<b>KLZ</b> Kalrez® seals -25°C to +120°C	
		<b>HNBR</b> Hydrogenated Nitrile seals -20°C to +120°C	

Repair and seal kits are available on request

For a seal kit add SK at the end of the model code and for a repair kit add RK

⚠ Exposure to high and low fluid temperatures will influence handle temperature. Operator safety must be considered.



SOLENOID  
FLOW CONTROL  
3 PORT DIRECTIONAL CONTROL  
4 PORT DIRECTIONAL CONTROL  
CHECK AND SHUTTLE  
PILOT OPERATED CHECK  
RELIEF  
EXCESS FLOW  
FILTERS  
PRESSURE SENSING  
PUMPS  
ACTUATORS  
TECHNICAL DATA