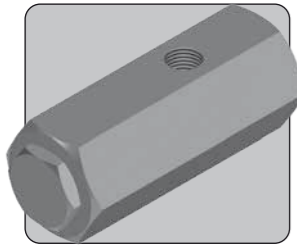


# RL25 -G RELIEF VALVE

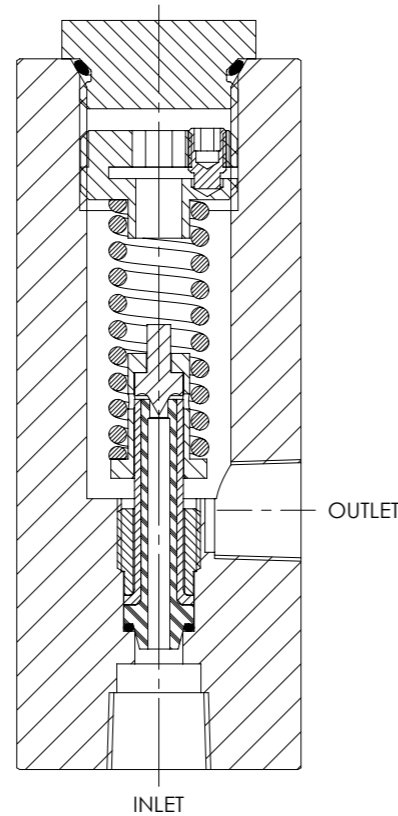
**1/4" UP TO 414 BAR 6,000 PSI**



The RL25-G is a 1/4" ported relief valve. Designed for emergency relief applications, it may be used to protect systems up to 414 bar (6,000 psi).

The valve is a proportional metering style relief valve with soft seats enabling its use with gases, and is approved as a safety accessory to category IV of the Pressure Equipment Directive.

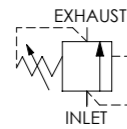
- Approved to category IV of the Pressure Equipment Directive (2014/68/EU)
- Available preset via internal adjustment or with an external handwheel adjustment option
- Wire locking and tagging available on request
- Minimal leakage at 90% of set pressure
- Reseat within 20% of set pressure
- Repeatably within ±5% of set pressure
- Suitable for subsea use (excluding handwheel version)
- Suitable for use with air, nitrogen and sweet natural gas.
- Suitable for many other media, contact us for advice
- Available in many other materials



## Specifications

**BASIC MODEL NUMBER** **RL25-G**

**SYMBOL**



**MAX WORKING PRESSURE** 414 bar (6,000 psi)

**MAX OUTLET PORT PRESSURE** 69 bar (1,000 psi)  
*Note: Any outlet port pressure is directly additive to the set pressure*

**ORIFICE SIZE** Ø2.4mm (Ø0.094")

**FLUID** Gases only  
*See materials section*

**TEMPERATURE RANGE** *See Product Selector opposite and Technical Data section*

**PORT SIZE** 1/4"

**WEIGHT** 0.9 kg (2.0 lb)

*Specifications may change without notice*

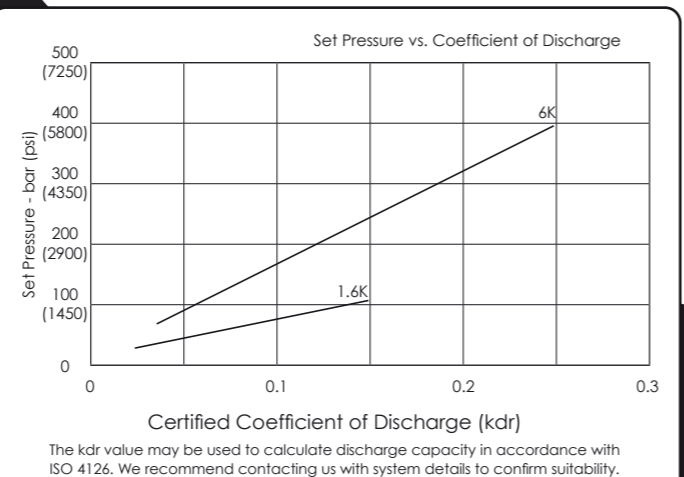
## Materials

Externally Exposed Parts: 316 stainless steel. The handwheel version contains other 300 series stainless steels.

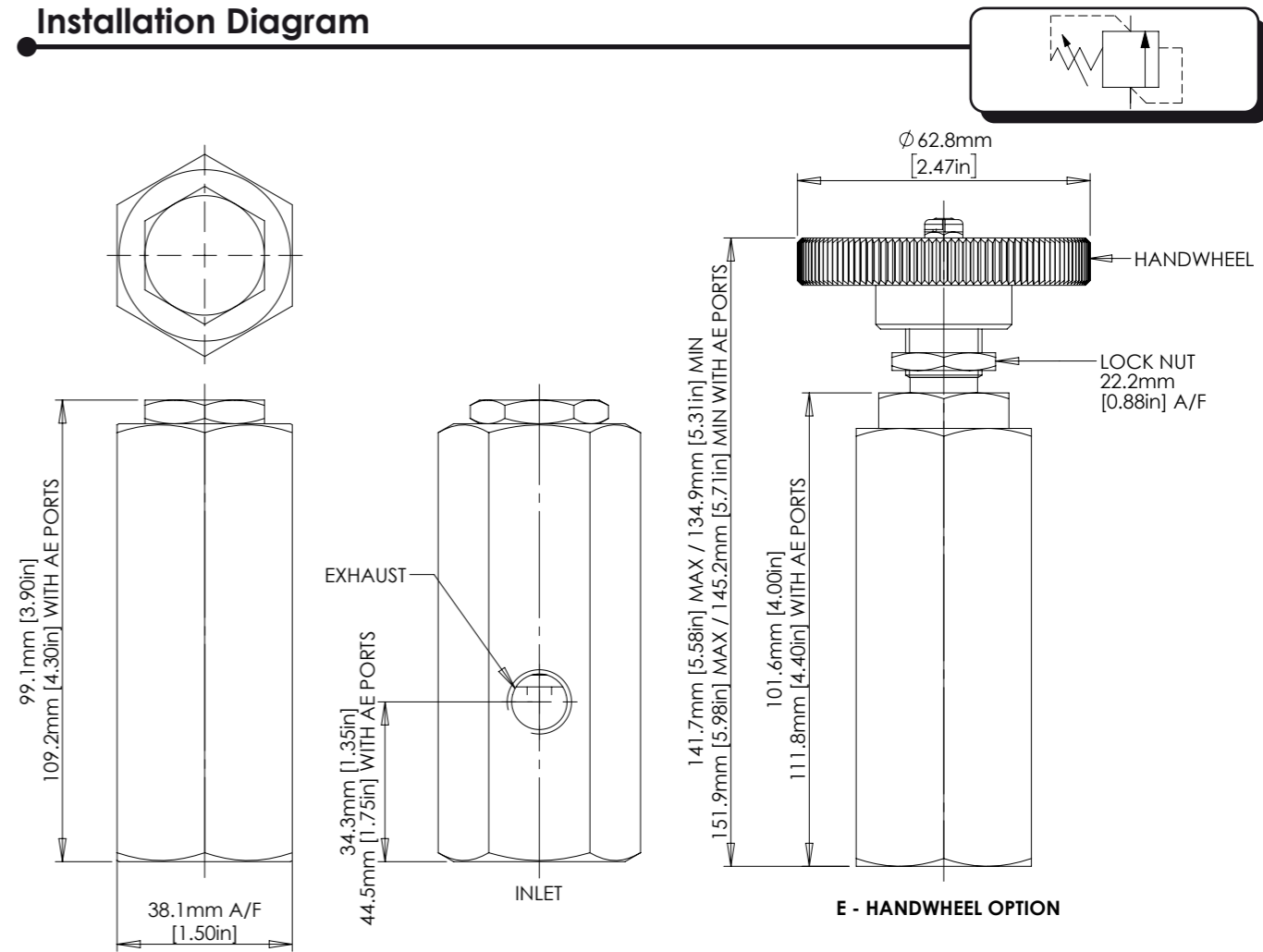
Internally Wetted Parts: 316, 302 and 431 stainless steel and polyamide-imide. The standard valve is designed for use with air, nitrogen and sweet natural gas. Contact us for advice when use with other media is required.

⚠ The standard valve has Viton® seals. Further seal options are available via the Product Selector. Compatibility with the working fluid at the operating temperature must be considered.

## Typical Performance



## Installation Diagram



## Product Selector

**RL25 - 44AE - 25P - E - G - NBR - 1.6K**

VALVE TYPE	INLET PORT OPTIONS	EXHAUST PORT OPTIONS	VALVE OPTIONS	SEAT TYPE	SEAL OPTIONS	SET PRESSURE RANGE
<b>RL25</b>	<b>P</b> 1/4" BSPP female inlet and exhaust	<b>25P</b> 1/4" BSPP female exhaust	<b>E</b> Handwheel (external) adjustment	<b>G</b> Soft seats	<b>NBR</b> Nitrile seals -30°C to +80°C	<b>1.6K</b> 28 - 110 bar (400 - 1,600 psi)
	<b>N</b> 1/4" NPT female inlet and exhaust	<b>25N</b> 1/4" NPT female exhaust	<b>E</b> Handwheel (external) adjustment	<b>G</b> Soft seats	<b>EP</b> EPDM seals -40°C to +80°C	<b>6K</b> 69 - 414 bar (1,000 - 6,000 psi)
	<b>44AE</b> 1/4" OD medium pressure tube inlet		<b>E</b> Handwheel (external) adjustment	<b>G</b> Soft seats	<b>KLZ</b> Kalrez® seals -25°C to +80°C	<b>6K</b> 69 - 414 bar (1,000 - 6,000 psi)
	<b>56AE</b> 3/8" OD medium pressure tube inlet		<b>E</b> Handwheel (external) adjustment	<b>G</b> Soft seats	<b>HNBR</b> Hydrogenated Nitrile seals -20°C to +80°C	<b>6K</b> 69 - 414 bar (1,000 - 6,000 psi)
	<b>81AE</b> 9/16" OD medium pressure tube inlet		<b>E</b> Handwheel (external) adjustment	<b>G</b> Soft seats	<b>HNBR</b> Hydrogenated Nitrile seals -20°C to +80°C	<b>6K</b> 69 - 414 bar (1,000 - 6,000 psi)

*Leave blank for P and N inlet options*

*Leave blank if none required*

*G option must be selected*

*Leave blank for Viton® seals -10°C to +80°C*

*Exposure to high and low fluid temperatures will influence handle temperature. Operator safety must be considered*

*Advise us of set pressure if factory pre-setting is required*

*Further seal options are available on request*

*Repair and seal kits are available on request*

*For a seal kit add SK at the end of the model code and for a repair kit add RK*



SOLENOID  
FLOW CONTROL  
3 PORT DIRECTIONAL CONTROL  
4 PORT DIRECTIONAL CONTROL  
CHECK AND SHUTTLE  
PILOT OPERATED CHECK  
RELIEF  
EXCESS FLOW  
FILTERS  
PRESSURE SENSING  
PUMPS  
ACTUATORS  
TECHNICAL DATA