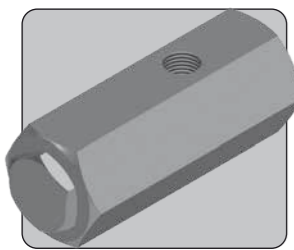


RL25 RELIEF VALVE

1/4" UP TO 1,379 BAR 20,000 PSI



The RL25 is a 1/4" ported relief valve. Designed for emergency relief applications, it may be used to protect systems up to 1,379 bar (20,000 psi).

The valve is a proportional metering style relief valve, and is approved as a safety accessory to category IV of the Pressure Equipment Directive, enabling its use in the most demanding applications.

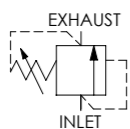
- Approved to category IV of the Pressure Equipment Directive (2014/68/EU)
- Available preset via internal adjustment or with an external handwheel adjustment option
- Wire locking and tagging available on request
- Minimal leakage at 90% of set pressure
- Reseat within 20% of set pressure
- Repeatably within ±5% of set pressure
- Suitable for subsea use (excluding handwheel version)
- Suitable for use with mineral oils and water glycols, with options for water and sea water duty
- Suitable for many other media, contact us for advice
- Available in many other materials

Specifications

BASIC MODEL NUMBER

RL25

SYMBOL



MAX WORKING PRESSURE

1,379 bar
(20,000 psi)

MAX OUTLET PORT PRESSURE

69 bar
(1,000 psi)
Note: Any outlet port pressure is directly additive to the set pressure

ORIFICE SIZE

1.6k/4k/9k/15k: Ø3.2mm (Ø0.125")
20k: Ø2.7mm (Ø0.108")

FLUID

Liquids only
See materials section

TEMPERATURE RANGE

See Product Selector opposite and Technical Data section

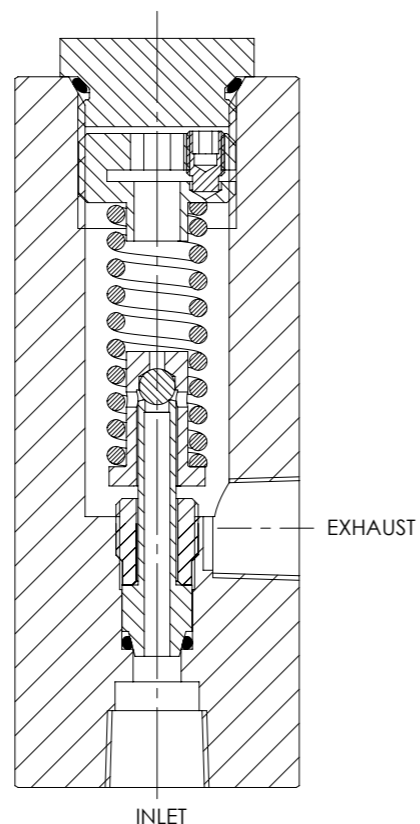
PORT SIZE

1/4"

WEIGHT

0.9 kg
(2.0 lb)

Specifications may change without notice



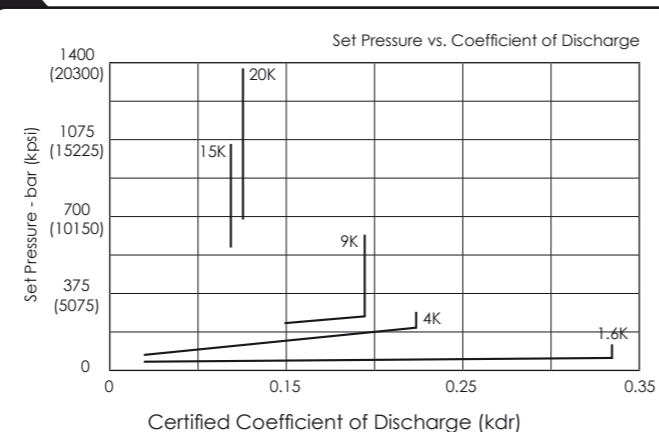
Materials

Externally Exposed Parts: 316 stainless steel. The handwheel version contains other 300 series stainless steels.

Internally Wetted Parts: 316 and 302 stainless steel. The seat and ball are 440C stainless steel and silicon nitride respectively. The water duty version contains a 17-4 PH stainless steel seat. The sea water duty valve uses only 316 stainless steel, inconel and silicon nitride in wetted areas. Note that use with water above 100°C is not recommended.

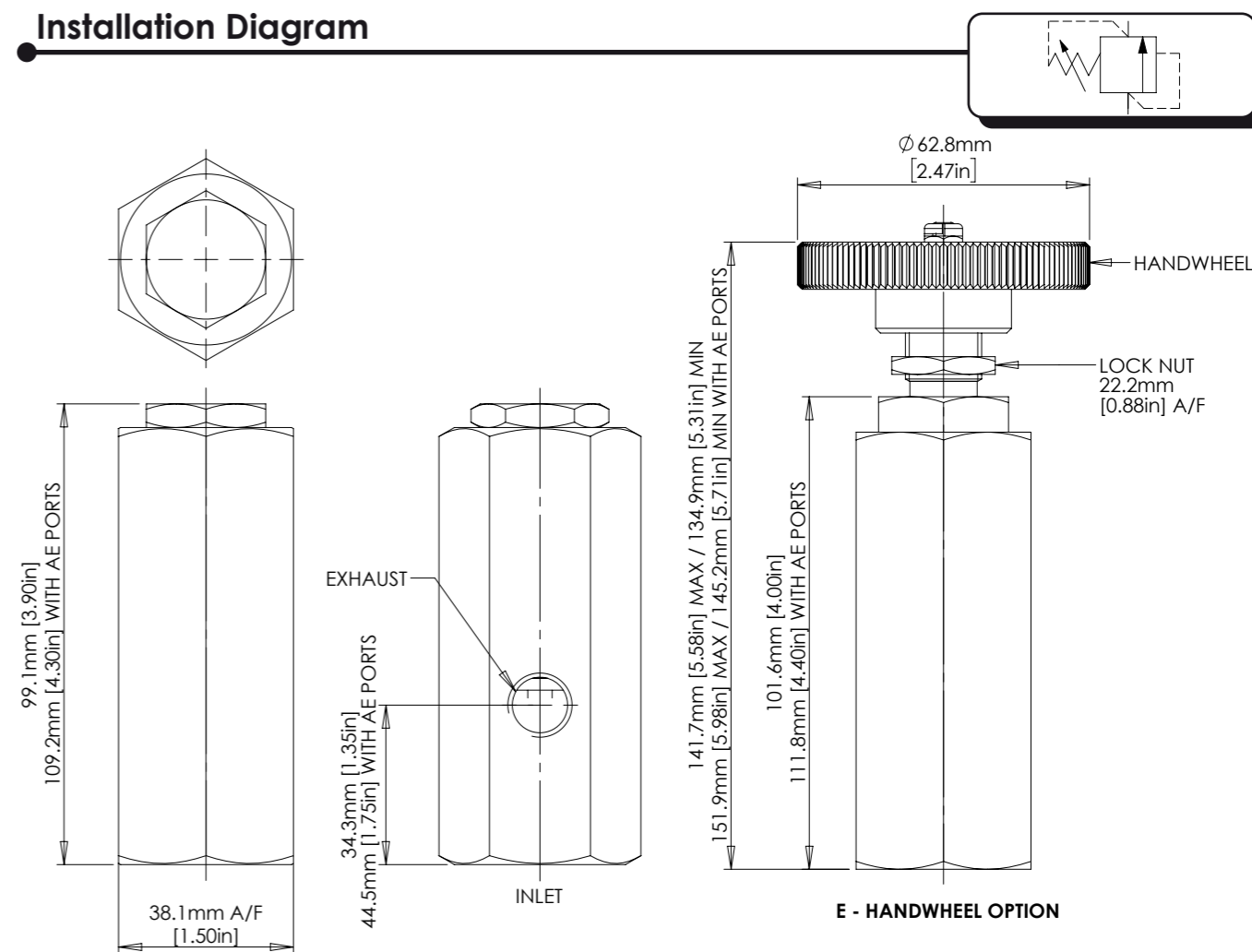
⚠ The standard valve has Viton® seals. Further seal options are available via the Product Selector. Compatibility with the working fluid at the operating temperature must be considered.

Typical Performance



The kdr value may be used to calculate discharge capacity in accordance with ISO 4126. We recommend contacting us with system details to confirm suitability.

Installation Diagram



Product Selector

RL25 - 44AE - 25P - E - WD - NBR - 1.6K

VALVE TYPE	INLET PORT OPTIONS	EXHAUST PORT OPTIONS	VALVE OPTIONS	WORKING FLUID OPTIONS	SEAL OPTIONS	SET PRESSURE RANGE
RL25	P 1/4" BSPP female inlet and exhaust Max 1034 bar (15,000psi)	25P 1/4" BSPP female exhaust	E Handwheel (external) adjustment	WD Water duty	NBR Nitrile seals -30°C to +105°C	1.6K 28 - 110 bar (400 - 1,600 psi)
	N 1/4" NPT female inlet and exhaust Max 1034 bar (15,000psi)	25N 1/4" NPT female exhaust	⚠ Exposure to high and low fluid temperatures will influence handle temperature. Operator safety must be considered	SWD Sea water duty	KLZ Kalrez® seals -25°C to +200°C	4K 69 - 276 bar (1,000 - 4,000 psi)
	44AE 1/4" OD medium pressure tube inlet		Further adjustment options are available on request		HNBR Hydrogenated Nitrile seals -20°C to +150°C	9K 207 - 621 bar (3,000 - 9,000 psi)
	56AE 3/8" OD medium pressure tube inlet				Further seal options are available on request	15K 552 - 1,034 bar (8,000 - 15,000 psi)
	81AE 9/16" OD medium pressure tube inlet					20K 690 - 1,379 bar (10,000 - 20,000 psi) Not suitable for P BSP or N NPT inlet ports Advise us of set pressure if factory pre-setting is required



CATALOGUE ALSO AVAILABLE ON CD
VISIT OUR WEBSITE FOR A FULL ONLINE SEARCH FACILITY
www.bisvalves.co.uk

BS VALVES
The Specifier's Catalogue